



## JUVENILE HALL/CAMP RETURNEE PROGRAM

Alicia Garoupa, Interim Director  
Pupil Services  
(213) 241-3844

### Central Office Support/Pupil Services

Dr. Denise Miranda, Coordinator  
(213) 241-0761  
[denise.miranda@lausd.net](mailto:denise.miranda@lausd.net)

Jennifer Lopez, Lead Counselor  
(213) 241-2789  
[jel9093@lausd.net](mailto:jel9093@lausd.net)

Yazmin Rangel Arias, PSA Aide  
(213) 241-3512  
[yazminrangelarias@lausd.net](mailto:yazminrangelarias@lausd.net)

### Juvenile Hall PSA Counselors

Mario Martinez  
Los Padrinos Juvenile Hall (310) 483-1592  
[mxm2413@lausd.net](mailto:mxm2413@lausd.net)

Yolanda Lofland  
Central Eastlake Juvenile Hall (323) 226-8500  
[yolanda.lofland@lausd.net](mailto:yolanda.lofland@lausd.net)

Marcela Tarquino-Klossner  
Barry J. Nidorf Juvenile Hall (818) 256-1012  
[marcela.klossner@lausd.net](mailto:marcela.klossner@lausd.net)

## Los Angeles Unified School District

### Camp Returnee Placement PSA Counselors

**CENTRAL** | Azucena Luna  
(213) 202-2008  
[axl0349@lausd.net](mailto:axl0349@lausd.net)

**EAST** | Cesar Chaparro  
(213) 202-2011  
[cjc1301@lausd.net](mailto:cjc1301@lausd.net)

**NORTHEAST** | Megan Brown  
(818) 686-4449  
[megan.brown@lausd.net](mailto:megan.brown@lausd.net)

**NORTHWEST** | Paul Schuster  
(818) 654-3635  
[pschuste@lausd.net](mailto:pschuste@lausd.net)

**SOUTH** | Wendy Arreola-Cholico  
(310) 354-3203  
[wxa4943@lausd.net](mailto:wxa4943@lausd.net)

**WEST** | Dexter Goseng  
(310) 235-3786  
[dtg0715@lausd.net](mailto:dtg0715@lausd.net)

### Camp Returnee Aftercare PSA Counselors

**CENTRAL** | Susan Martinez  
(213) 202-2010  
[sym5708@lausd.net](mailto:sym5708@lausd.net)

**EAST** | Cristina Quiroz  
(323) 695-4685  
[cristina.quiroz@lausd.net](mailto:cristina.quiroz@lausd.net)

**NORTHEAST** | Ana Salazar  
(818) 686-4448  
[ams9146@lausd.net](mailto:ams9146@lausd.net)

**NORTHWEST** | Jose Diaz  
(818) 399-6387  
[jad2721@lausd.net](mailto:jad2721@lausd.net)

**SOUTH** | Michael Hinckley  
(310) 354-3204  
[michael.hinckley@lausd.net](mailto:michael.hinckley@lausd.net)

**WEST** | Jay Kirby  
(310) 914-2177  
[jay.kirby@lausd.net](mailto:jay.kirby@lausd.net)

## Los Angeles Unified School District STUDENT HEALTH AND HUMAN SERVICES Pupil Services



## JUVENILE HALL/CAMP RETURNEE PROGRAM



333 S. Beaudry Avenue - 29th Floor  
Los Angeles, CA 90017  
Phone: 213-241-3844

<http://achieve.lausd.net/pupilservices>

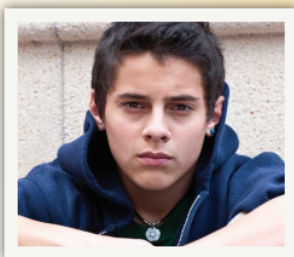
## JUVENILE HALL/CAMP RETURNEE PROGRAM

**Mission** *To ensure that all LAUSD students are enrolled, attending, engaged, and on-track to graduate.*

### Background

Every year, thousands of students return to the Los Angeles Unified School District (LAUSD) schools from juvenile halls, probation camps, and residential placements. These students face many challenges including:

- Gang involvement and safety issues
- History of exposure to trauma
- Social, behavioral, and adjustment issues
- Academic failure
- School and home instability
- Disconnection from school
- Severe credit deficiency
- High risk for school failure and dropout



### Student Population

In L.A. County, approximately 180 juvenile offenders are sent home from a detention facility each month (LA County Dept. of Probation).

Two-thirds of all youth released from LA County correctional facilities reside within LA Unified School District, making it the highest population of probation students in the nation.

In August of 2014, almost half of the 647 juveniles in Los Angeles County Probation camps were LAUSD students.

### Program Objectives

- Ensure the successful re-enrollment and transition of all LAUSD students following juvenile detention
- Monitor and analyze data trends (attendance, academic achievement, behavior) to guide effective case management and other student support and intervention efforts
- Support student success, as measured by successful transition and re-entry into school, attendance and academic achievement, reduction in recidivism rates, credit accrual toward a high school diploma or equivalent, high school completion, and college and/or career readiness

### Who We Serve

- LAUSD students involved in the juvenile justice system, including those returning from juvenile probation camps, juvenile halls, and residential placements
- Educational Service Centers, school administrators, staff, and families
- Community agencies involved in the supervision and care of foster and probation youth



### Juvenile Hall PSA Counselors

- Monitor the detention of LAUSD students
- Support early identification of students at-risk for school failure
- Ensure student enrollment and attendance improvement
- Serve as a liaison between the courts and schools
- Engage parents/caregivers to support improved educational outcomes

### Placement PSA Counselors

- Conduct a comprehensive educational assessment for each LAUSD student who is returning from juvenile camp
- Identify appropriate school placement for all LAUSD students through participation in a transitional Multi-Disciplinary Team meeting (MDTs) prior to each student's release
- Support the development of a transition/re-entry plan in collaboration with the Division of Special Education (STRIVE program), Student Discipline and Expulsion Support unit (SDES), other LAUSD staff, LACOE, and Probation
- Link student and family to school and community resources

### Aftercare PSA Counselors

- Provide targeted case management for all LAUSD students returning from juvenile camp and identified high-risk students who are returning from juvenile halls
- Monitor student attendance, behavior, and academic achievement
- Support students in the development and achievement of short and long term academic and/or career goals